

**SECURITYMATE**

SMADP1

# Audio Door Phone

- INSTRUCTION MANUAL



## **FEATURES:**

1. The outdoor unit features an anti-oxidation and durable zinc alloy panel.
2. The intercom has a two-wire connection.
3. The high quality circuit ensures a clear intercom voice.
4. The product features an electric lock release function.
5. It has 8 chord melodies and 3 adjustable ringing volume levels for you to choose from.
6. It is easy to install and operate.
7. The outdoor unit meets IP44 waterproof standards.

## **SAFETY INSTRUCTIONS:**

1. Do not install the indoor unit in a high temperature or high humidity environment.
2. Avoid bumping or dropping the unit.

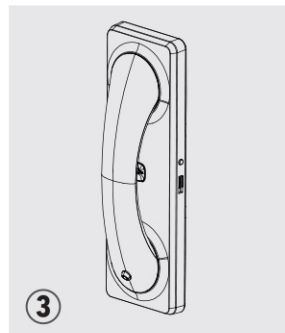
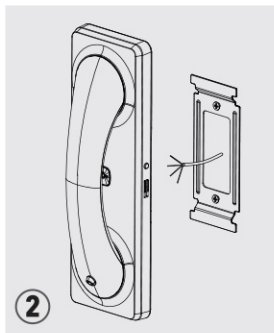
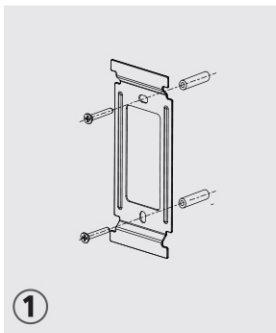
## **CAUTIONS**

1. To prevent damage, the unit should be fastened onto the wall or on the door.
2. Device should be installed close to a power source.

## **INSTALLATION INSTRUCTIONS:**

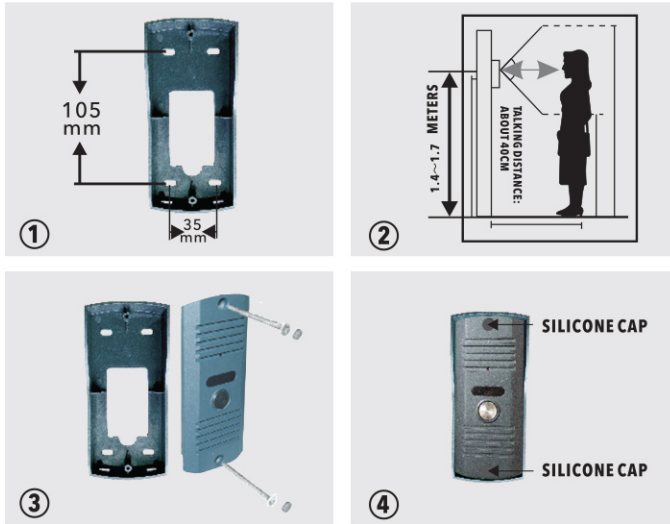
### **A. INDOOR UNIT**

Drill two holes with the correct distance between them in the wall and fasten the bracket on the wall with screws. Connect the wires by putting them through the middle of the bracket and then hang the indoor unit on the bracket. Pull the indoor unit straight along with the wall to fix it on the bracket. See the pictures below:

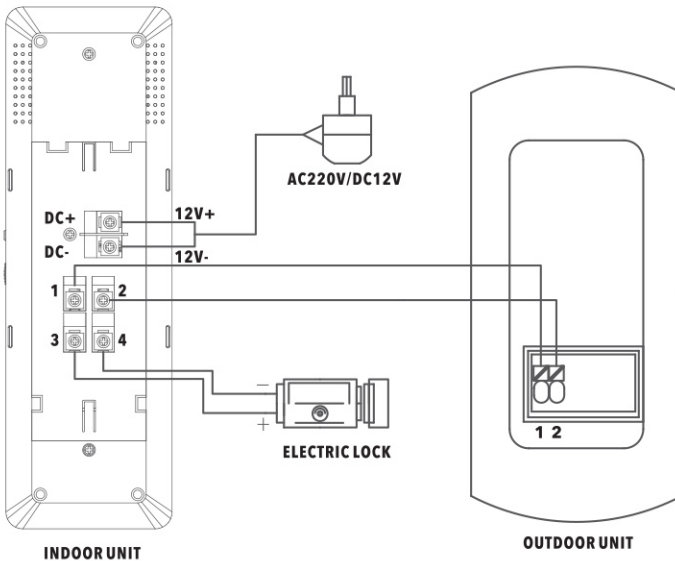


## **B. OUTDOOR UNIT**

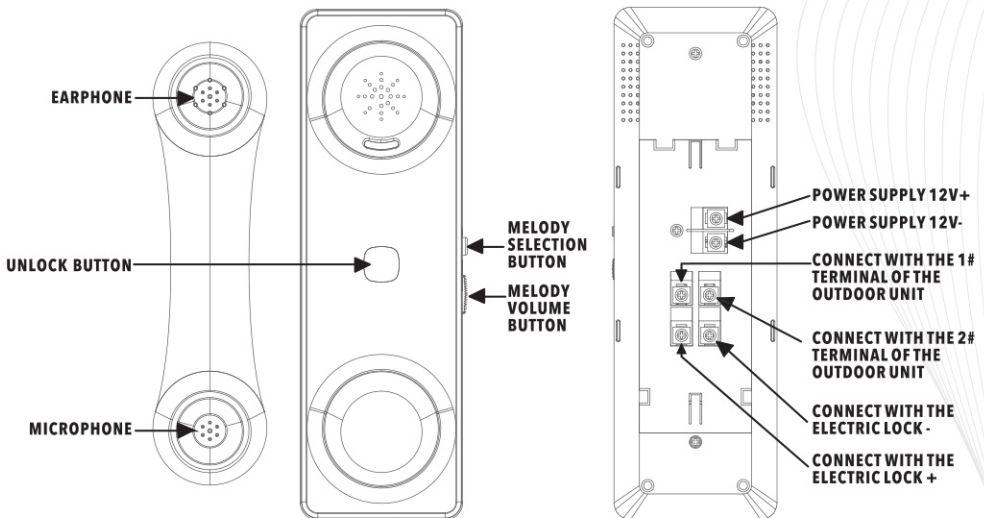
1. Drill four holes in the wall and fix the rain shade on the wall with screws. (Screw size: 4x30BA)
2. Install the outdoor unit by the door at a height of 1.4m~1.7m from the ground, avoiding direct sunlight and rain.
3. Finish the wire connection and then install the outdoor unit in the rain shade with screws.
4. Seal the screw holes with the silicone caps.



## **WIRING DIAGRAM:**



# FUNCTION KEYS AND WIRING INSTRUCTIONS:



# TECHNICAL SPECIFICATIONS:

<b>POWER SUPPLY VOLTAGE</b>	<b>AC 220-240V/50Hz</b>
<b>ADAPTOR OUTPUT VOLTAGE &amp; CURRENT</b>	<b>DC 12V 1000mA</b>
<b>STANDBY POWER CONSUMPTION</b>	<b>&lt; 1W</b>
<b>RINGING POWER CONSUMPTION</b>	<b>&lt; 3W</b>
<b>TALKING VOLUME</b>	<b>≥ 70dB</b>
<b>TALKING DISTANCE</b>	<b>≤ 200 metres (0.5mm)</b>
<b>UNLOCKING DISTANCE</b>	<b>≤ 20 metres (1.0mm)</b>

Manufactured in China  
 Distributed by GENTECH INDUSTRIES  
 Address: Unit 4, Barbeque Terrace, Dytchley Road,  
 Barbeque Downs, South Africa  
 Telephone: +27 11 466 6790/793  
 Email: [customercare@gentechindustries.co.za](mailto:customercare@gentechindustries.co.za)  
[www.gentechindustries.co.za](http://www.gentechindustries.co.za)

